

PTZ Dome Camera Quick Setup Guide

NO:101-100-0446-01
Issue:1.0

Precautions

Fully understand this document before using this device, and strictly observe rules in this document when using this device. If you install this device in public places, provide the tip "You have entered the area of electronic surveillance" in an eye-catching place. Failure to correctly use electrical products may cause fire and severe injuries.

WARNING	It alerts you to moderate dangers which, if not avoided, may cause minor or moderate injuries.
CAUTION	It alerts you to risks. Neglect of these risks may cause device damage, data loss, device performance deterioration, or unpredictable results.
NOTE	It provides additional information.

WARNING

- Strictly observe installation requirements when installing the device. The manufacturer shall not be held responsible for device damage caused by users' non-conformance to these requirements.
- Strictly conform to local electrical safety standards and use power adapters that are marked with the LPS standard when installing and using this device. Otherwise, this device may be damaged.
- Use accessories delivered with this device. The voltage must meet input voltage requirements for this device.
- If this device is installed in places with unsteady voltage, ground this device to discharge high energy such as electrical surges in order to prevent the power supply from burning out.
- When this device is in use, ensure that no water or any liquid flows into the device. If water or liquid unexpectedly flows into the device, immediately power off the device and disconnect all cables (such as power cables and network cables) from this device.
- Do not focus strong light (such as lighted bulbs or sunlight) on

this device. Otherwise, the service life of the image sensor may be shortened.

- If this device is installed in places where thunder and lightning frequently occur, ground the device nearby to discharge high energy such as thunder strikes in order to prevent device damage.

CAUTION

- Avoid heavy loads, intensive shakes, and soaking to prevent damages during transportation and storage. The warranty does not cover any device damage that is caused during secondary packaging and transportation after the original packaging is taken apart.
- Protect this device from fall-down and intensive strikes, keep the device away from magnetic field interference, and do not install the device in places with shaking surfaces or under shocks.
- Clean the device with a soft dry cloth. For stubborn dirt, dip the cloth into slight neutral cleanser, gently wipe the dirt with the cloth, and then dry the device.
- Do not jam the ventilation opening. Follow the installation instructions provided in this document when installing the device.
- Keep the device away from heat sources such as radiators, electric heaters, or other heat equipment.
- Keep the device away from moist, dusty, extremely hot or cold places, or places with strong electric radiation.
- If the device is installed outdoors, take insect- and moisture-proof measures to avoid circuit board corrosion that can affect monitoring.
- Remove the power plug if the device is idle for a long time.

Special Announcement

- All complete products sold by the manufacturer are delivered along with nameplates, quick setup guide and accessories after strict inspection. The manufacturer shall not be held responsible for counterfeit products.
- The manufacturer will update this manual according to product function enhancement or changes and regularly update the software and hardware described in this manual. Update information will be added to new versions of this manual without prior notice.
- This manual may contain misprints, technology information that is not accurate enough, or product function and operation description that is slightly inconsistent with the actual product, the final interpretation of company is as a standard.
- This manual is only for reference and does not ensure that the information is totally consistent with the actual product. For consistency, see the actual product.

NOTE

For more information, please refer to CD and website.

1 Open Package Examination

Open the package, check the appearance of product for no obvious damage, and confirm the item list for table 1-1 is consistent.

Table 1-1 Packing list

Component	Quantity	Remark
PTZ Dome Camera	1	
Quick Setup Guide	1	
Installation location sticker	1	
Stainless self-tapping screw PA3.0×35mm	3	
Swell plastic button	3	

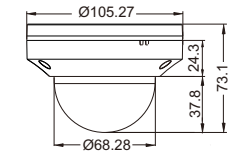
2.2 Camera Dimensions

NOTE

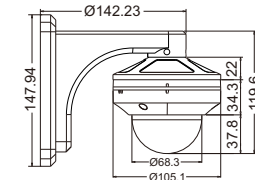
Different device may have different dimensions, please refer to the actual product.

Figure 2-2 Dimensions (Unit:mm)

Ceiling installation



Wall installation



2 Device Structure

2.1 Device Ports

NOTE

Different device may have different multi-head cable, please refer to the actual product.

Figure 2-1 multi-head cable



Table 2-1 Multi-head cable description

ID	Core	Description	Remark
1	Network access port	Connects to a standard Ethernet cable.	
2	Power supply (DC 12V)	Connects to a 12V(-15%~+10%) direct current (DC) power supply.	

3 Device Installation

WARNING

To avoid moisture influence, install the dome cover at least half an hour after the camera is installed and powered on.

The vandal dome camera can be installed in the ceiling, wall, bracket or ceiling bracket. This section describes how to install the camera in the ceiling.

- Stick the Installation location sticker on the ceiling or wall, Drill three holes based on the marks on the sticker. Drive the swell plastic buttons into the holes.
- Fix shell with screws to the ceiling directly for ceiling installation, as shown in Figure 3-1.
- Install bracket mount plate to the wall with screws for wall installation, as shown in Figure 3-2.

Figure 3-1 Ceiling installation

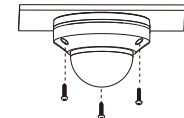
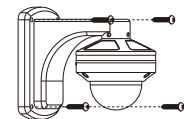


Figure 3-2 Wall installation



- Detach protection vinyl from the dome cover.

4 Quick Configuration(e.g IE)

3.1 Login

Step 1 Open the Internet Explorer, enter the IP address of IP camera (default value: 192.168.0.120) in the address box, and press Enter. The login page is displayed, as shown in figure 4-1.

Step 2 Input the user name and password.

NOTE

- The default user name is admin. The default password is admin. Change the password when you log in the system for the first time to ensure system security.
- You can change the system display language on the login page.

Figure 4-1 Login

Step 3 Click Login, the main page is displayed.

3.2 Modify IP address

Choose **Configuration > Device > Local Network**, the **Local Network** page is displayed.

Enter the IP address in the IP Address box and click **Apply** as shown in figure 4-2.

After the success of the IP address setting, please use the new IP address to log in the Web interface.

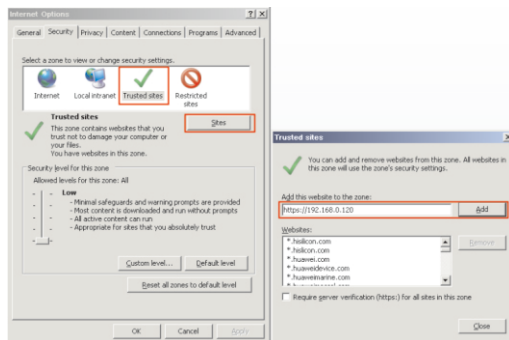
Figure 4-2 Local Network

3.3 Browsing Video

To ensure the real-time video can be played properly, you must perform the following operation when you log in the web for the first time:

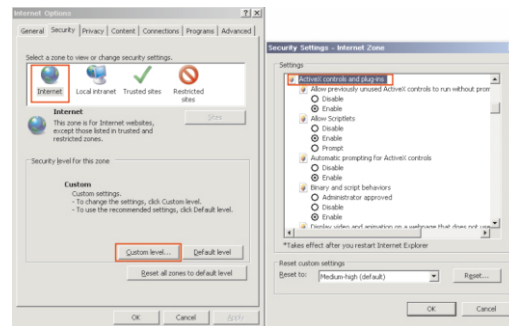
Step 1 the Internet Explorer. Choose **Tools > Internet options > Security > Trusted sites > Sites**, in the display dialog box, click **Add**, as shown in figure 4-3.

Figure 4-3 Adding a trusted site



Step 2 In the Internet Explorer, choose **Tool > Internet Options > Security > Customer level**, and set **Download unsigned ActiveX control** and **initialize and script ActiveX controls not marked as safe for scripting under ActiveX controls and plug-ins to Enable**, as shown in figure 4-4.

Figure 4-4 Configuring ActiveX control and plug-in



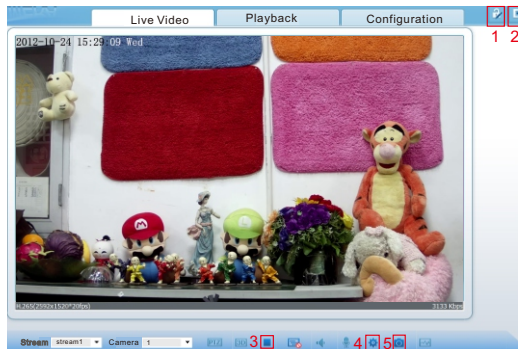
Step 3 Download and install the player control as prompted.

NOTE

If the repair tips displayed when installing the control, please ignore the prompt, and continue the installation, the login page is displayed when the control is loaded.

To browse a real-time video, click **Live Video**. The Live Video page is displayed, as shown in figure 4-5.

Figure 4-5 Live Video



Description

- Click to change the password, Please change the password when you log in to the system for the first time to ensure system security.
- Click to return to the login page.
- Click to stop playing a video; click to play a video.
- To set sensor parameters, click to open the Sensor Setting page. On the Sensor Setting page, you can set time segment, image, scene, exposure, WB, daylight, noise reduction, enhance image.
- Click , snapshot the video and save to local disk automatically.
- Double-click in the video area to enter the full-screen mode, and double-click again to exit.

To browse device information, Choose **"Configuration" the "Device Info"** page is displayed, as shown in figure 4-6.

Figure 4-6 Device Info

Choose **"Configuration > Stream > Base stream"**, the "Stream" page is displayed, as shown in figure 4-7.

Figure 4-7 Stream

- Set the parameters according to the page and click "apply".
- If the message "Apply success!" is displayed, click Confirm. The system saves the settings.
- If the message "Apply failed!" is displayed, you must apply for the Parameter Configure permission from an administrator. For details, see .
- If a message indicating that the "bit rate invalid" is displayed, enter a new bit rate value.

Choose **"Configuration > Maintenance"**, the "Camera Maintenance" is displayed, as shown in figure 4-8. You can restart and restore the camera in this page.

Figure 4-8 Camera Maintenance

Click , the message "Are you sure to restart?" is displayed, then click "Confirm", the device is restarted successfully five minutes later.

Click , the message "Are you sure to restore default settings?" is displayed, then click "Confirm", the device is restored to the factory settings.

CAUTION

After you click , all parameters (you can choose whether to reserve the IP address) will be restored to the factory settings. Use this function carefully.